


Rangers - Detailed Equivalencies

The following resource will help you transition from the old Rangers program to the new Girls First (GF) Rangers program. Using the chart, simply map out what you've completed in the old program to see where it fits in the new program. Remember, some of the old programming may fit in a couple of different new program areas and themes, and that's ok! You know the activities you've completed best, so use your judgement to determine where they fit. Once you know what you've done, you can plan out what you want to do in the new program.

GF Program Area	GF Theme	Current core Program Area	Current Activities
	<p><i>Our Story</i></p>	<p>Celebrate Guiding</p>	<p>Modern Women, Modern Guiding Just Us Girls Guiding Around the World What About WAGGGS? Girls Worldwide Say! We're in the Western Hemisphere Who Else Is Out There? A World Of Opportunities Working for WAGGGS Working Together Come Join Us Inspiring Others Who Can Be a Ranger? Guiding in the Real World The Guiding Movement Where's the ink? Make a Game of It Let's Get Serious As the World Changes Our Founding Mothers Acting Out Guiding Gear What's Out There?</p>
		<p>Global Awareness</p>	<p>Canadian World Friendship Fund</p>
	<p><i>Spirit of Guiding</i></p>	<p>Celebrate Guiding</p>	<p>For Fun and Friendship Get Up and Have Fun Guides' Own Make It Special</p>
		<p>Global Awareness</p>	<p>Roving Reporter</p>

Rangers - Detailed Equivalencies

GF Program Area

GF Theme

Current core Program Area

Current Activities



<p><i>Camping and the Great Outdoors</i></p>	<p>Environment, Outdoors and Camping</p>	<p>Take a Hike Going Natural Get Creative Camping Skills The Outdoor Community Oops! Love the Outdoors Lost Safety First Hide and Seek Natural vs. Unnatural Are We Almost There? For the Birds To Camp or Not to Camp A Winter Wonderland Mmmm Dinner Dinner Anyone?</p>
--	--	---



<p><i>Being You</i></p>	<p>Community Connections</p>	<p>Coming Out</p>
	<p>Explore Your Creativity</p>	<p>Fashion Around the World</p>
	<p>Leadership and Management</p>	<p>Role Models My Inspiration How Do You Learn?</p>
	<p>Your Future</p>	<p>Role-playing</p>
<p><i>Gender Power</i></p>	<p>Global Awareness</p>	<p>Women and the Law</p>
	<p>Your Future</p>	<p>The Famous Five and You</p>

Rangers - Detailed Equivalencies

GF Program Area

GF Theme

Current core Program Area

Current Activities

EXPLORE IDENTITIES cont.

<i>Different Together</i>	Community Connections	Raising Kids
	Explore Your Creativity	Let Everyone Know
	Global Awareness	Folk Tales Tell Me a Story Food Awareness Where in the World? World Religions
	Your Future	disABILITY

BUILD SKILLS

<i>Money Sense</i>	Leadership and Management	Financial Responsibility
	Your Future	Living in the Real World Play the Market Student Loans Tax Complications
<i>Life Stuff</i>	Environment, Outdoors and Camping	A Life Outdoors
	Explore Your Creativity	The Arts as a Career
	Global Awareness	Talk About It
	Leadership and Management	Leadership Skills Take the Lead Developing Others What You Say Barriers to Effective Communication Leadership in Action I Propose Meeting Themes File It Recruiting Leadership and Knowledge What To Do in Case of an Emergency

Rangers - Detailed Equivalencies

GF Program Area

GF Theme

Current core Program Area

Current Activities

BUILD SKILLS cont.

Life Stuff cont.

How To:

Leadership and Management cont.

Your Future

Community Connections

Environment, Outdoors and Camping

Leadership and Management

Your Future

Speaking of Leadership
Dream Team
Make Learning Fun
Spread the Word
Reach For It
Maintaining Balance
Culture Influences Leadership
Facilitating or Leading?
Constructive Criticism
Girls for Safer Communities

The Evolving Family
Family Concerns
Job Interview Techniques
The Job Search
Gender Roles
Post-secondary Education
What's for You?
Your Guiding Resume
Women Entrepreneurs
Gotta Drive
What's Your Passion?
Techno Jobs

Online World
Girls For Safer Communities

Oops!

Leading Children
It's Official
Be a Tutor

Independent Living
Culinary Arts
Ms. Fix-It
Self-defence
Safety First

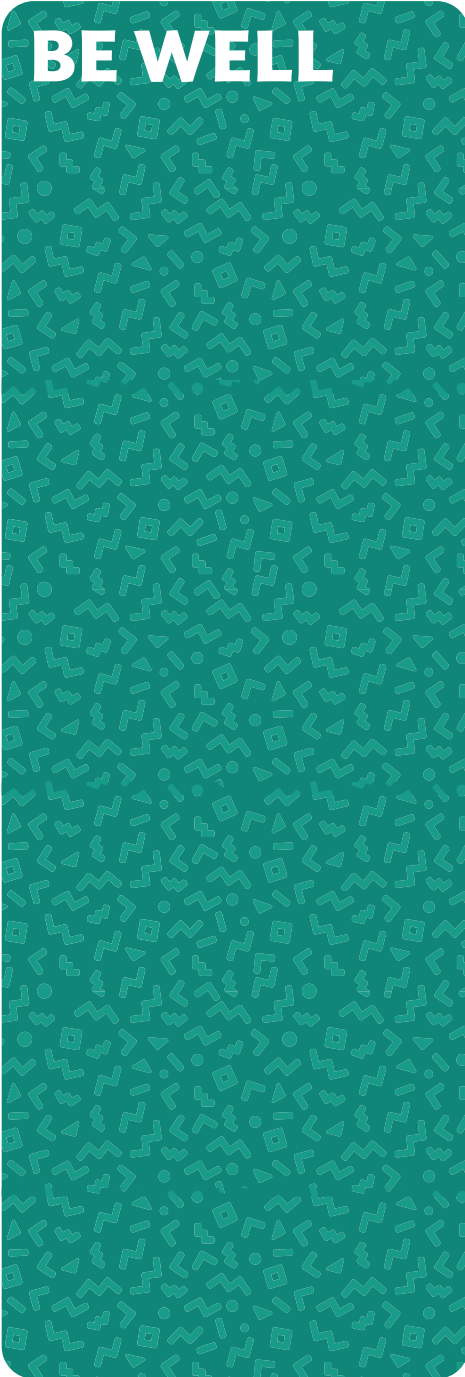
Rangers - Detailed Equivalencies

GF Program Area

GF Theme

Current core Program Area

Current Activities



GF Program Area	GF Theme	Current core Program Area	Current Activities
BE WELL	<i>My Mighty Mind</i>	Healthy Living	Getting Help Chill Out! Meditation Nobody Understands Me How You Feel About Food
	<i>My Physical Self</i>	Healthy Living	Where's the Motivation? Get Personal A Winter Wonderland Pass It On Dance, Dance, Dance Let's Talk About Sex Young Mothers Canada's Food Guide Fun and Fancy Fare Going Organic What's For Lunch Caffeine! What Do You Need? Let's Talk Cover Up Body Art Going Natural Is There A Health Professional in the House? Health Sciences Staying Healthy H2O
	<i>My Healthy Relationships</i>	Community Connections	Social Aggression and Bullying
		Healthy Living	Starting a Relationship Healthy Relationships
	Leadership and Management	Work It Out	
	Your Future	Roommate Wanted Growing Up The Evolving Family Family Ties Helping Others	

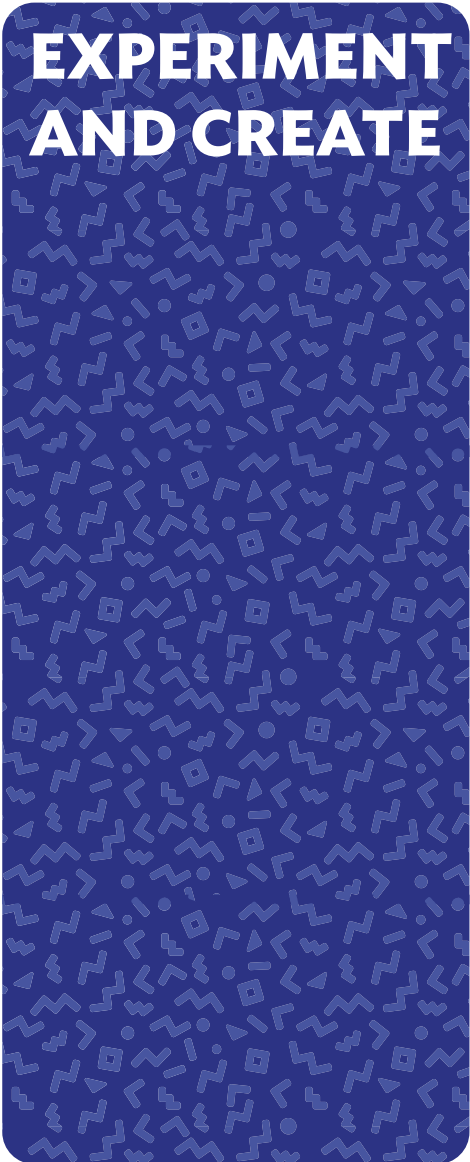
Rangers - Detailed Equivalencies

GF Program Area

GF Theme

Current core Program Area

Current Activities



<i>Science Lab</i>	Explore Your Creativity	The Science of Art
<i>Design Space</i>	Explore Your Creativity	Design 101 Chic But Cheap Architecture
	Your Future	Canadian Ingenuity
<i>Art Studio</i>	Explore Your Creativity	Artists and the Natural World Public Art Hollywood North Let's Dance Documenting Reality Videography Photo Essay Picture Perfect Comic Relief It's Child's Play Behind the Masks Theater Sports Being Crafty Getting Better Book Club Zines Can Lit An Evening at the Opera On a Happy Note Musical Fusion Women in Art Art All Around

Rangers - Detailed Equivalencies

GF Program Area

GF Theme

Current core Program Area

Current Activities

CONNECT AND QUESTION

Local Communities	Community Connections	Identify Your Communities Act Local Take a Closer Look Get Your Message Out Ride the Bus Be Prepared Local Culture Art and Life Promoting Your Guiding Community Volunteerism Sharing and Supporting Each Other Community Challenges Changing Communities
	Environment, Outdoors and Camping	Slipping Away Urban Wildlife Our Local Environment
	Global Awareness	We're Twins The World At Home Our Local Environment
	Healthy Living	Eating Local Down on the Farm Girls for Safer Communities
Canadian Connections	Community Connections	Raise Your Voice Say What? Canadiana Changing Spaces Speaking of Canada Oral History
	Global Awareness	Canadian Foreign Aid
	Your Future	Know Your Rights

Rangers - Detailed Equivalencies

GF Program Area

GF Theme

Current core Program Area

Current Activities

CONNECT AND QUESTION cont.

World Stage	Community Connections	Global Ties
	Environment, Outdoors and Camping	Shopping and the Environment Reduce, Reuse, Recycle Energy Check Falling From the Sky Protecting Our Natural Resources Water, Water, Everywhere
	Global Awareness	Learning About the World A Global Education The World on Your TV First, Second and Third That's Illegal Civil War What Matters to You Roving Reporter The World at Home What's Fair? Conflict and Non-Violence I'm So Hungry Ecotourism An Unfair Fashion Show The Power of One
	Healthy Living	The Wide World of Sports

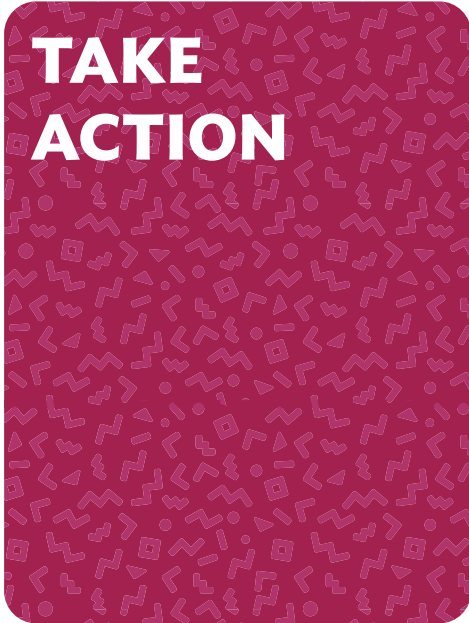
Rangers - Detailed Equivalencies

GF Program Area

GF Theme

Current core Program Area

Current Activities



<i>Your Choice</i>		
<i>Your Voice</i>	Community Connections	Students Speak Out
	Global Awareness	Advocacy A Helping Hand
<i>Your Action</i>	Celebrate Guiding	Making A Difference Helping Ourselves
	Community Connections	Spruce It Up Influence Others Take Back the Night
	Environment, Outdoors and Camping	Get Involved

NOTE: For the following, look at what you did to complete these activities and then decide where it fits best with the new program:

- Celebrate Guiding - #31
- Community Connections - #31
- Environment Outdoors and Camping - #30
- Explore Your Creativity - #30

- Global Awareness - #30
- Healthy Living - #33
- Leadership and Management - #31
- Your Future - #31